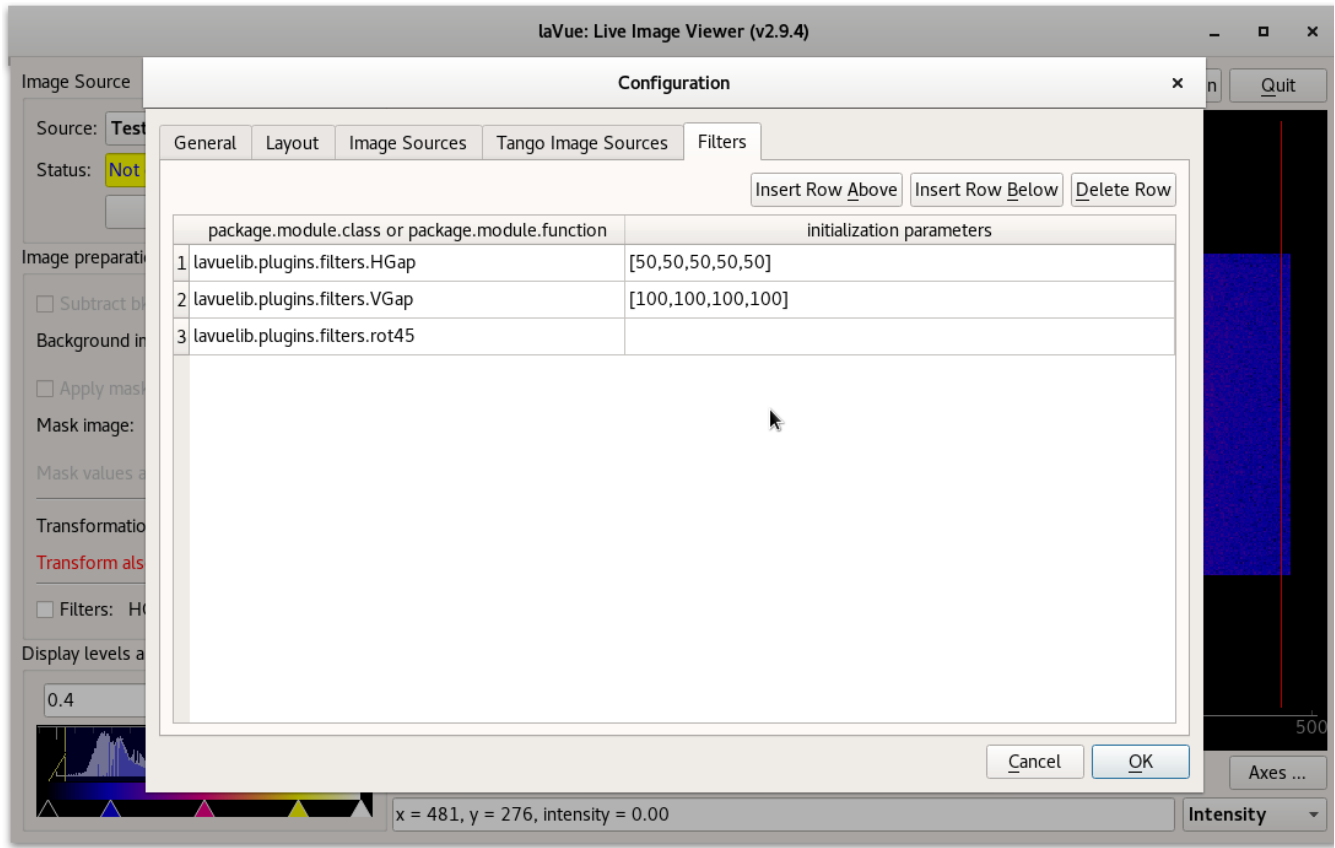


LaVue - Filter plugins settings

The fourth tab of the configuration dialog contains **Filters** configuration. It allows to add the user filter plugins defined by classes or functions in python packages.



Filter plugin table buttons:

- **Insert Row Above:** inserts a row for a filter plugin above the selected row
- **Insert Row Below:** inserts a row for a filter plugin below the selected row
- **Delete Row:** deletes the selected row

Filter plugin table columns:

- **package.module.class** or **package.module.function:** location of user plugin class or function in *package.module* directories
- **initialization parameters:** string which with initialization parameters of filter plugin class constructor

Examples of the filters can be found at [LaVue - Filter plugins](#)