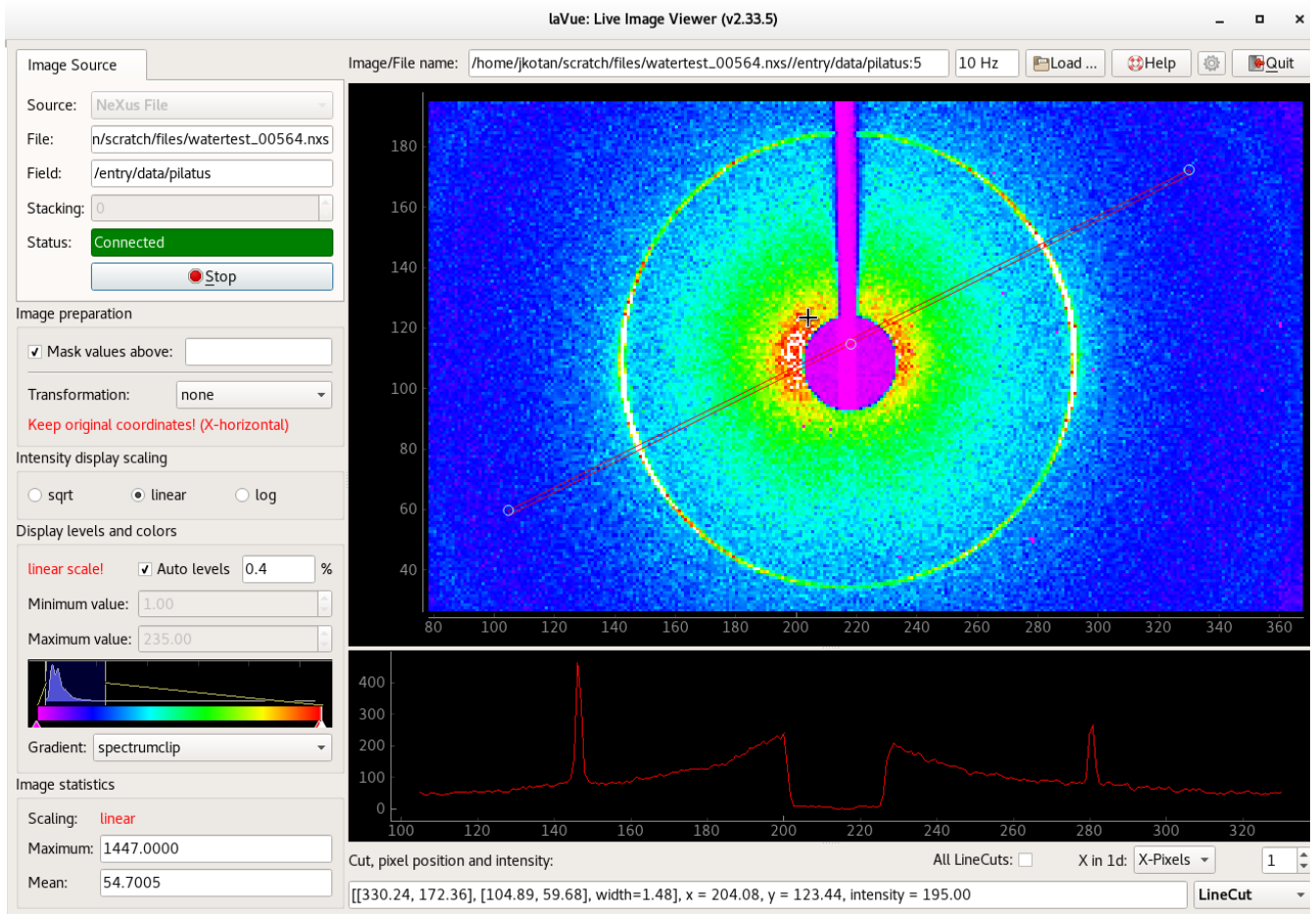


LaVue - Live Image Viewer

Introduction

This is a simple implementation of a live viewer front end. It is supposed to show a live image view from xray-detectors at PETRA3, e.g. Pilatus, Lambda, Eiger, PerkinElmer, PCO, LimaCCD, AGIPD, Jungfrau and others.



Authors

Jan Kotaski <jan.kotaski at desy.de>, Christoph Rosemann <christoph.rosemann at desy.de>, André Rothkirch <andre.rothkirch at desy.de>