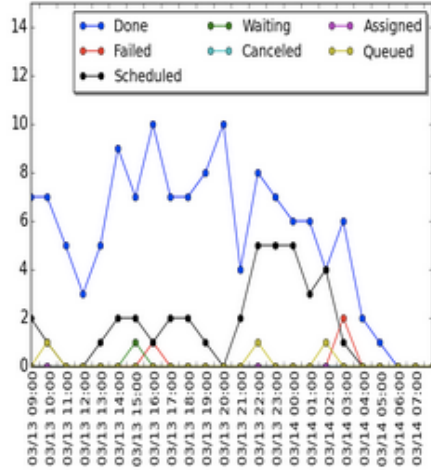


Replication status plots

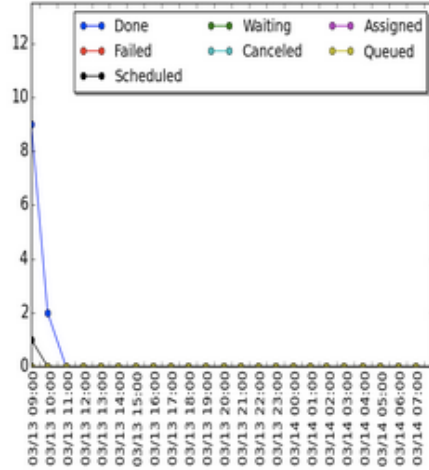
Dropped from 2017/03/14 05:00 UTC

agency_time site_summary pilot_trends Replication waiting time pilot_submission transfer_rate Pilot processing time pilot_summary Replication_status Downtime information Check stalled pilot

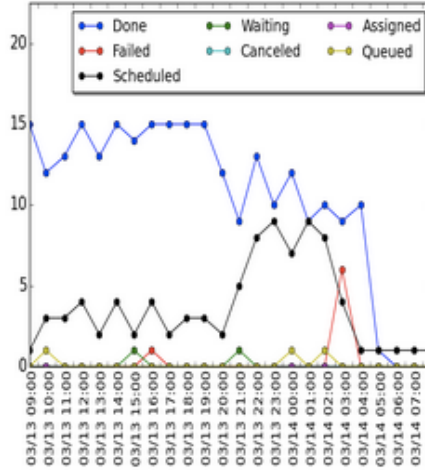
CESNET-TMP-SE



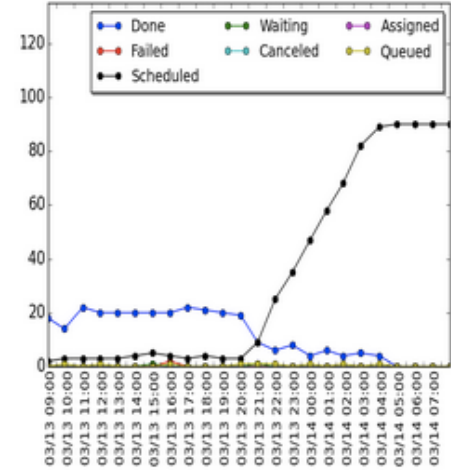
KEK2-DATA-SE



KEK2-TMP-SE



PNNL-TMP-SE



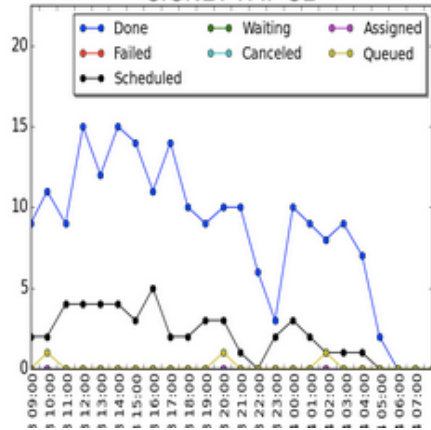
CESNET-TMP-SE

KEK2-DATA-SE

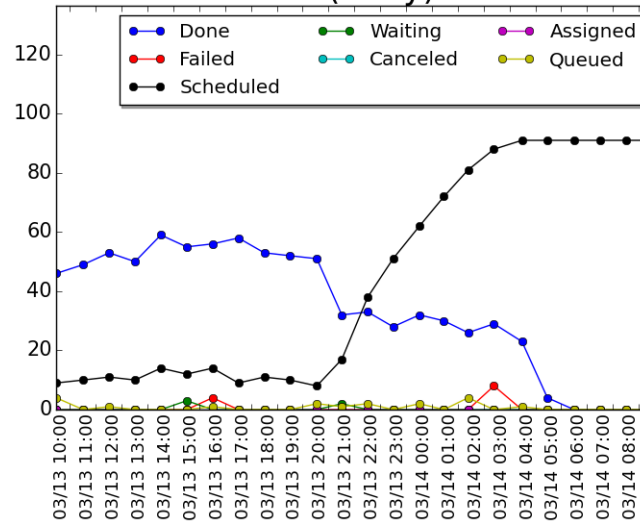
KEK2-TMP-SE

PNNL-TMP-SE

SIGNET-TMP-SE



All (1day)



FTS monitor 1hour activity

No finished jobs, No replication jobs are running?

Overview

Showing 1 to 2 out of 2 from the last 1 hour

First Previous 1 Next Last

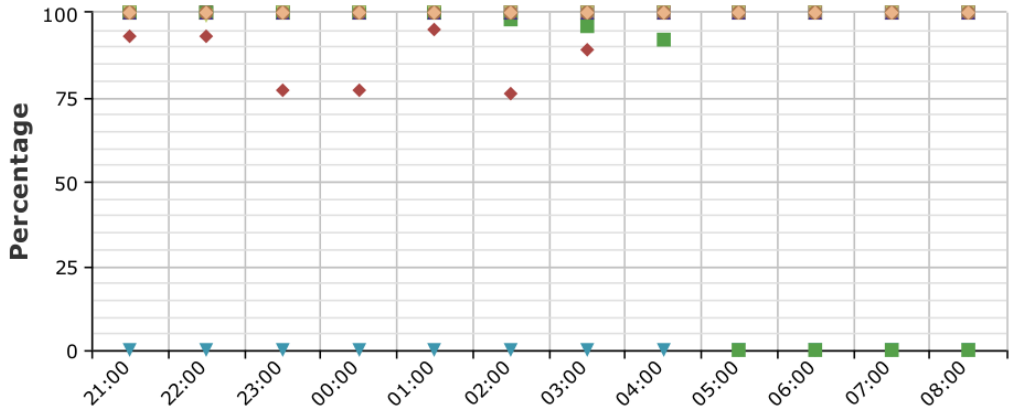
Source	Destination	VO	Submitted	Active	Staging	S.Active	Finished	Failed	Cancel	Rate (last 1h)	VO Thr.
+ srm://charon01	srm://se.hep.pr	belle	1588	2	-	-	-	430	-	0.00 %	-
+ srm://kek2-se03.cc.kek.jp	srm://kek2-se03.cc.kek.jp	belle	-	1	-	-	-	2	-	0.00 %	-
			1588	3	0	0	0	432	0	-	-

Failure jobs

(Source) charon01.westgrid.ca (UVic-TMP-SE) → (Destination) se.hep.pnnl.gov (PNNL-TMP-SRM)

Efficiency

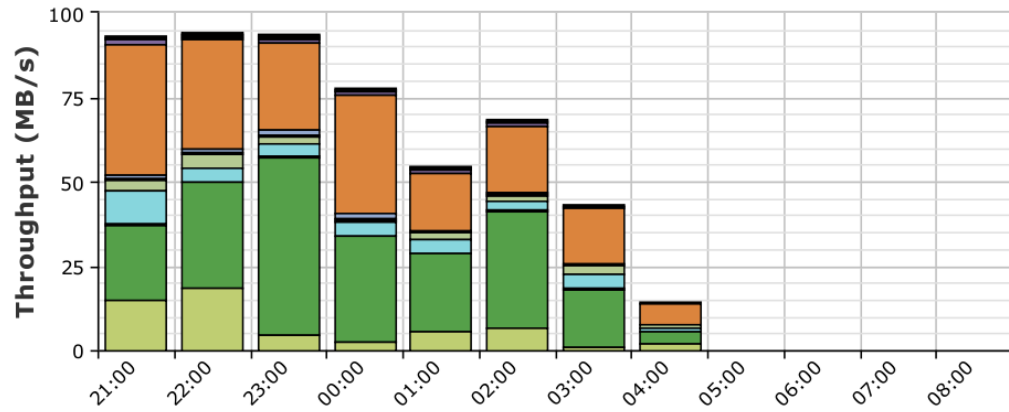
2017-03-13 21:00 to 2017-03-14 09:00 UTC



- Sources
- atlasse.lnf.infn.it
 - b2se.mel.coepp.org.au
 - belle-se-head.sdfarm.kr
 - bgrid3.phys.ntu.edu.tw
 - charon01.westgrid.ca
 - dcache-se-desy.desy.de
 - dcache.ijs.si
 - dpm.cyf-kr.edu.pl
 - dpm1.egee.cesnet.cz
 - grid-srm.rzg.mpg.de
 - gridka-dcache.fzk.de
 - hephyse.oeaw.ac.at
 - kek2-se03.cc.kek.jp
 - se-srm-00.to.infn.it
 - se.hep.pnnl.gov
 - storm-01.roma3.infn.it
 - storm02.clumeq.mcgill.ca

Throughput

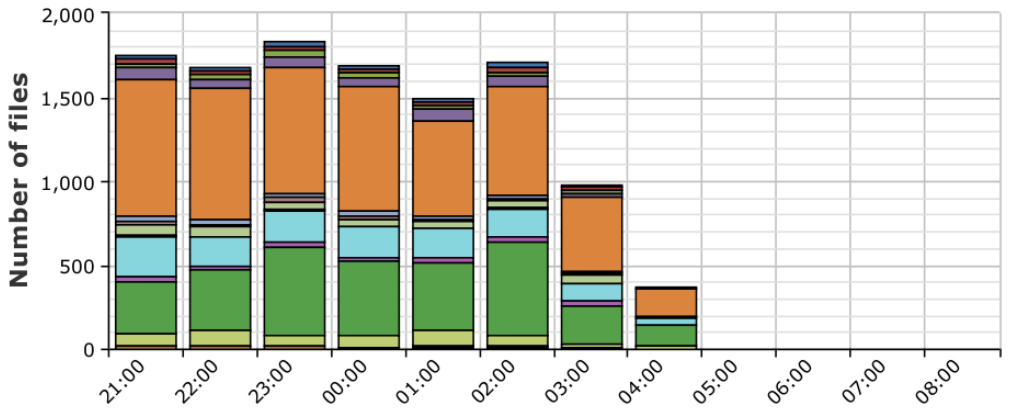
2017-03-13 21:00 to 2017-03-14 09:00 UTC



- Sources
- atlasse.lnf.infn.it
 - b2se.mel.coepp.org.au
 - belle-se-head.sdfarm.kr
 - bgrid3.phys.ntu.edu.tw
 - charon01.westgrid.ca
 - dcache-se-desy.desy.de
 - dcache.ijs.si
 - dpm.cyf-kr.edu.pl
 - dpm1.egee.cesnet.cz
 - grid-srm.rzg.mpg.de
 - gridka-dcache.fzk.de
 - hephyse.oeaw.ac.at
 - kek2-se03.cc.kek.jp
 - se-srm-00.to.infn.it
 - se.hep.pnnl.gov
 - storm-01.roma3.infn.it
 - storm02.clumeq.mcgill.ca

Transfer Successes

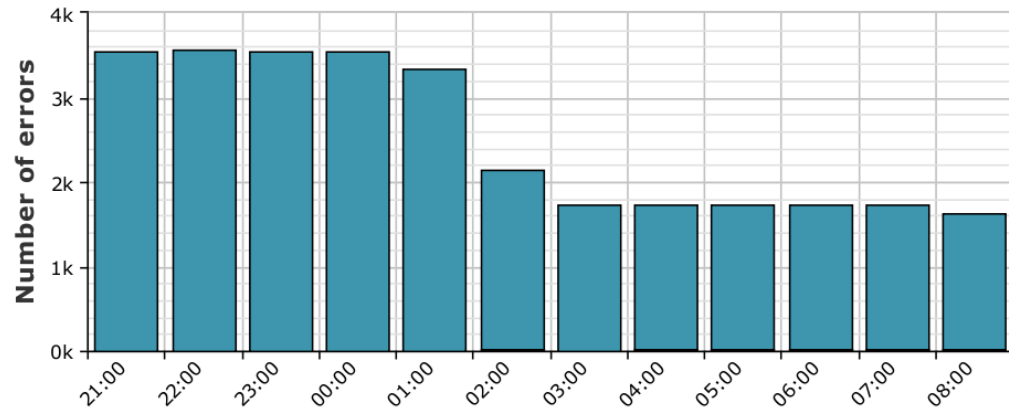
2017-03-13 21:00 to 2017-03-14 09:00 UTC



- Sources
- atlasse.lnf.infn.it
 - b2se.mel.coepp.org.au
 - belle-se-head.sdfarm.kr
 - bgrid3.phys.ntu.edu.tw
 - charon01.westgrid.ca
 - dcache-se-desy.desy.de
 - dcache.ijs.si
 - dpm.cyf-kr.edu.pl
 - dpm1.egee.cesnet.cz
 - grid-srm.rzg.mpg.de
 - gridka-dcache.fzk.de
 - hephyse.oeaw.ac.at
 - kek2-se03.cc.kek.jp
 - se-srm-00.to.infn.it
 - se.hep.pnnl.gov
 - storm-01.roma3.infn.it
 - storm02.clumeq.mcgill.ca

Transfer Failures

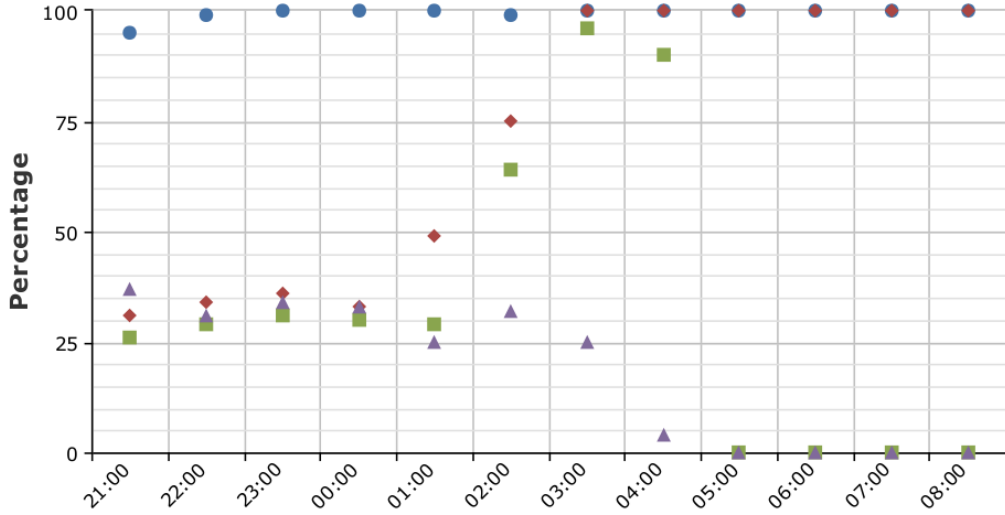
2017-03-13 21:00 to 2017-03-14 09:00 UTC



- Sources
- atlasse.lnf.infn.it
 - b2se.mel.coepp.org.au
 - belle-se-head.sdfarm.kr
 - bgrid3.phys.ntu.edu.tw
 - charon01.westgrid.ca
 - dcache-se-desy.desy.de
 - dcache.ijs.si
 - dpm.cyf-kr.edu.pl
 - dpm1.egee.cesnet.cz
 - grid-srm.rzg.mpg.de
 - gridka-dcache.fzk.de
 - hephyse.oeaw.ac.at
 - kek2-se03.cc.kek.jp
 - se-srm-00.to.infn.it
 - se.hep.pnnl.gov
 - storm-01.roma3.infn.it
 - storm02.clumeq.mcgill.ca

Efficiency

2017-03-13 21:00 to 2017-03-14 09:00 UTC

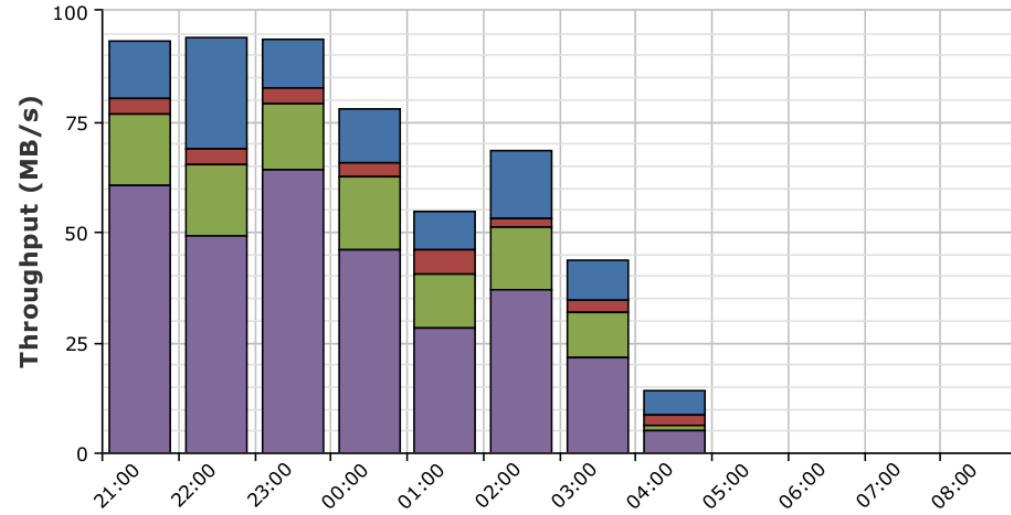


Destinations



Throughput

2017-03-13 21:00 to 2017-03-14 09:00 UTC

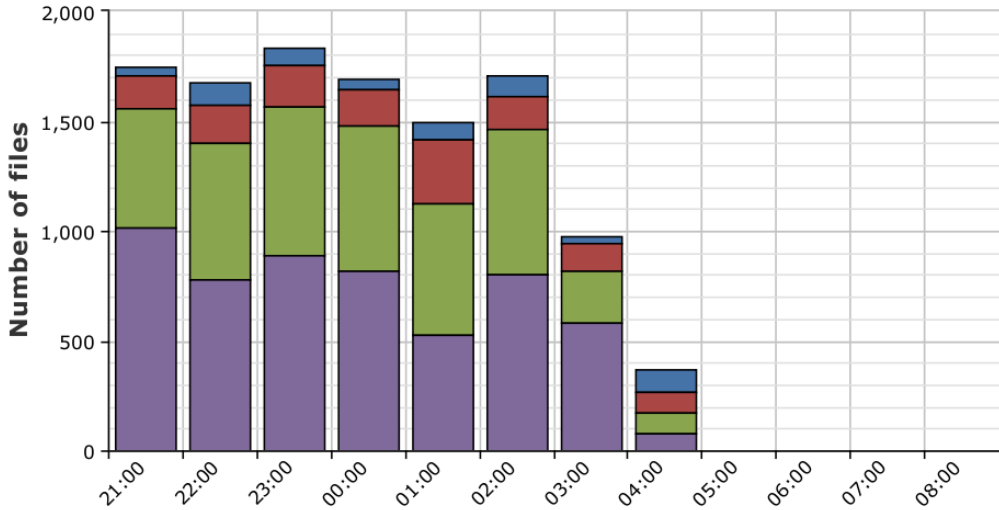


Destinations



Transfer Successes

2017-03-13 21:00 to 2017-03-14 09:00 UTC

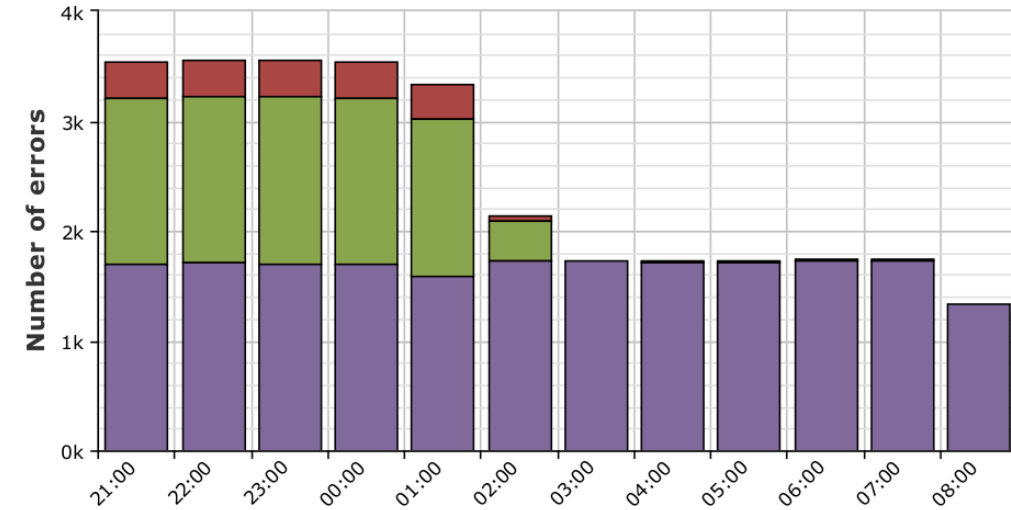


Destinations



Transfer Failures

2017-03-13 21:00 to 2017-03-14 09:00 UTC



Destinations

