

The HZG/NOVA virtual analysis infrastructure at the DESY HPC center.

Required for access:

- DOOR account from DESY
- PSX computer account from DESY IT (organized by the local beamline scientist)
 - Needs PSX and NOVA resources activated

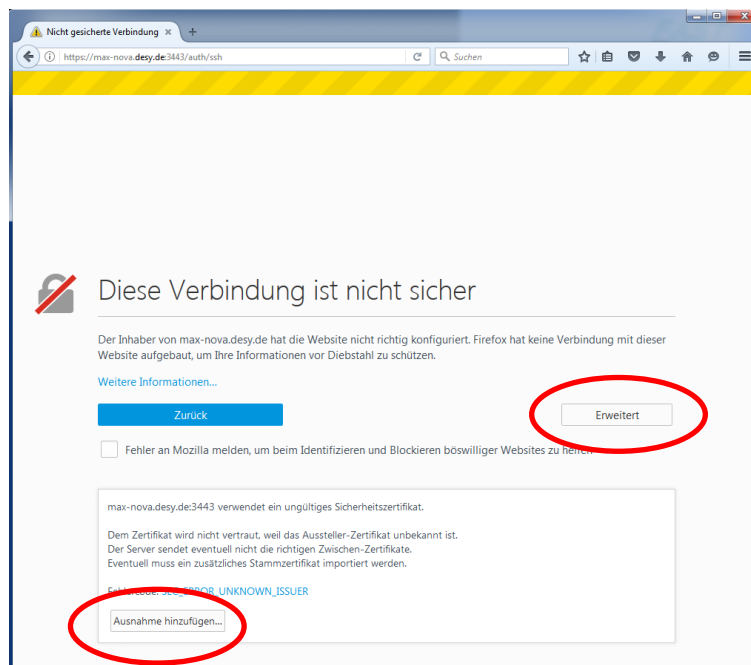
There are two ways of connecting to the virtual analysis infrastructure:

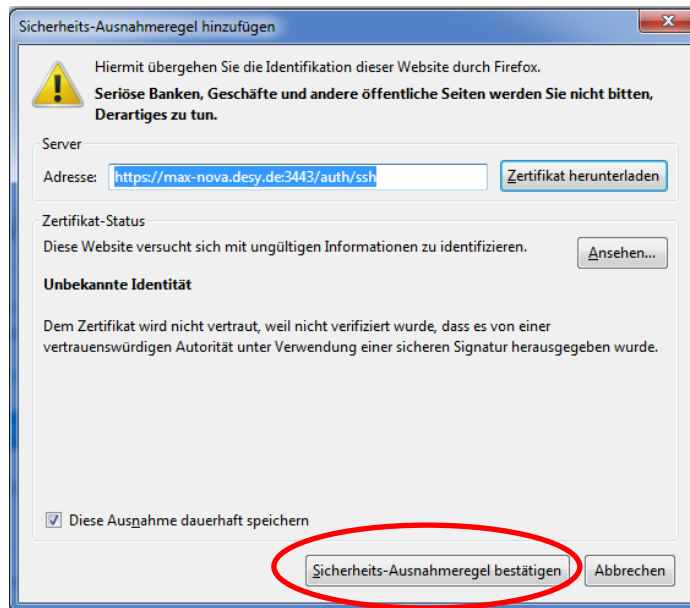
1. Via web browser running sessions in your tab
2. Using FAST X2 client

Regardless of your preferred way of connecting in the future for the first setup connect to

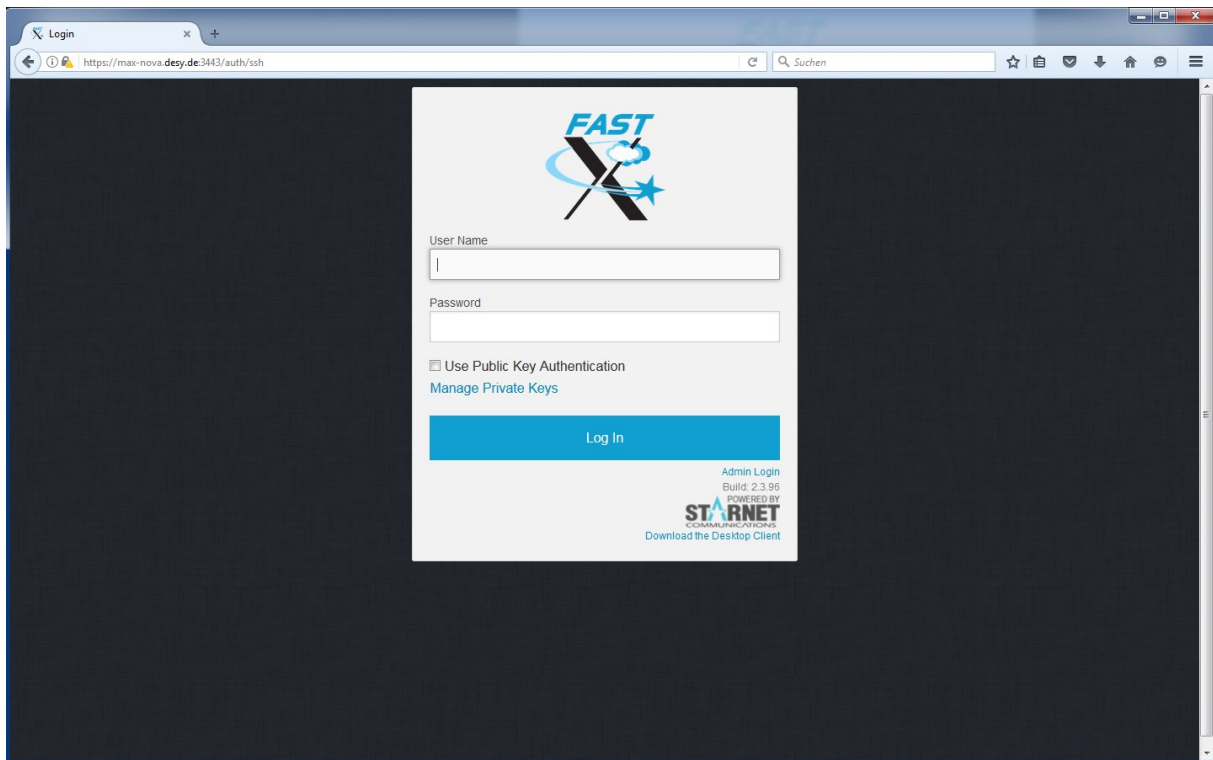
<https://max-nova.desy.de:3443>

If you obtain information the connecting is not save acknowledge the security exception.



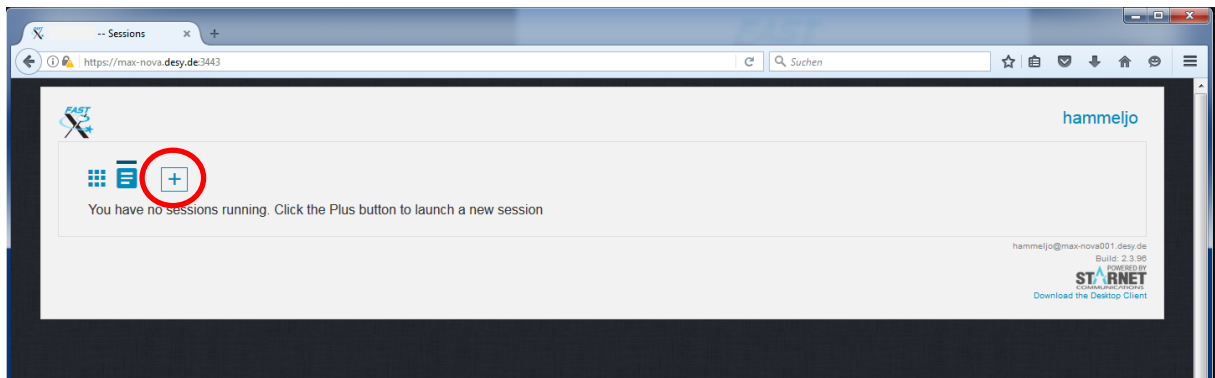


You will be redirected to the general login screen:

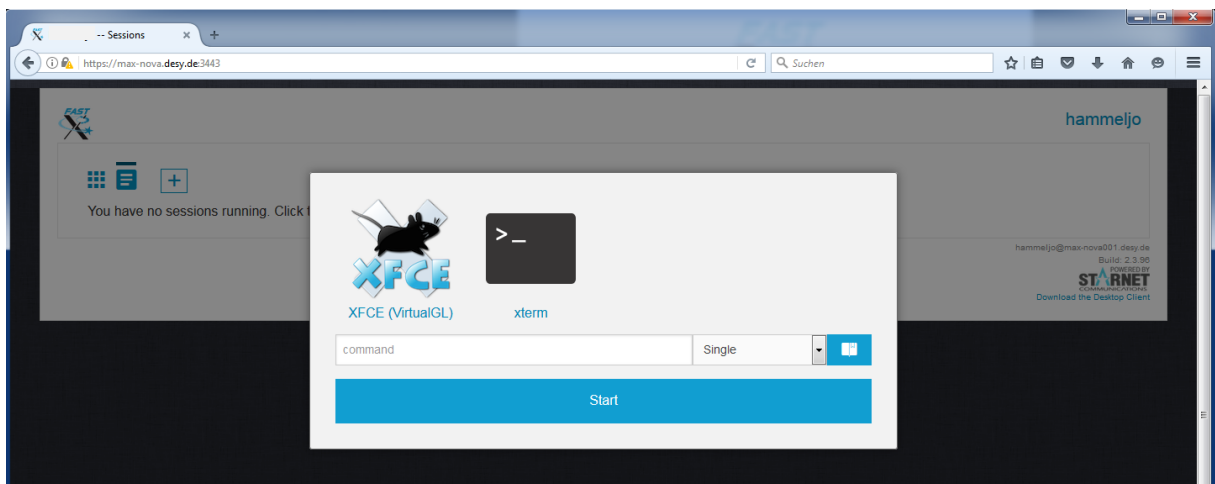


Connecting using the web client:

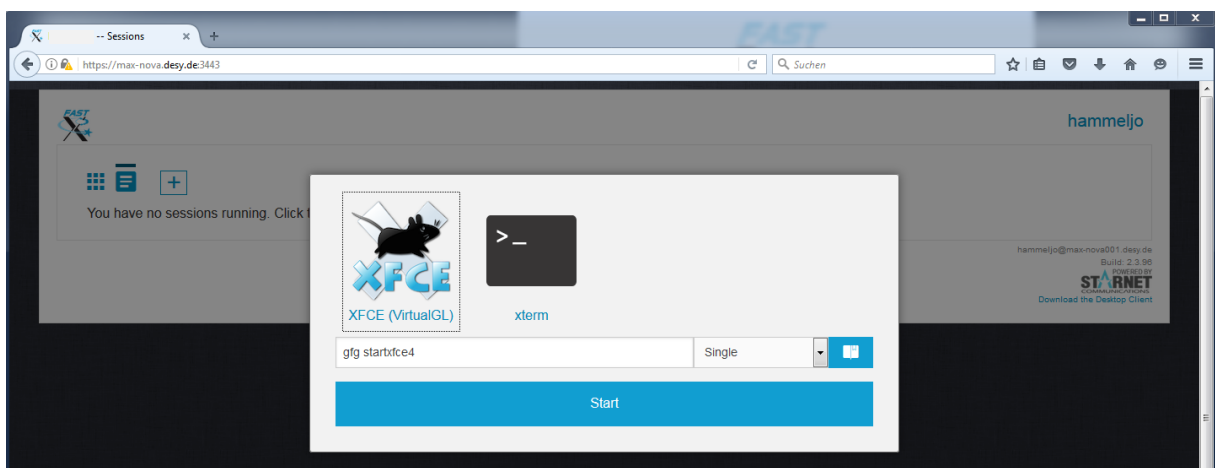
Login with your DESY computer account credentials and you will be directed to the following screen.



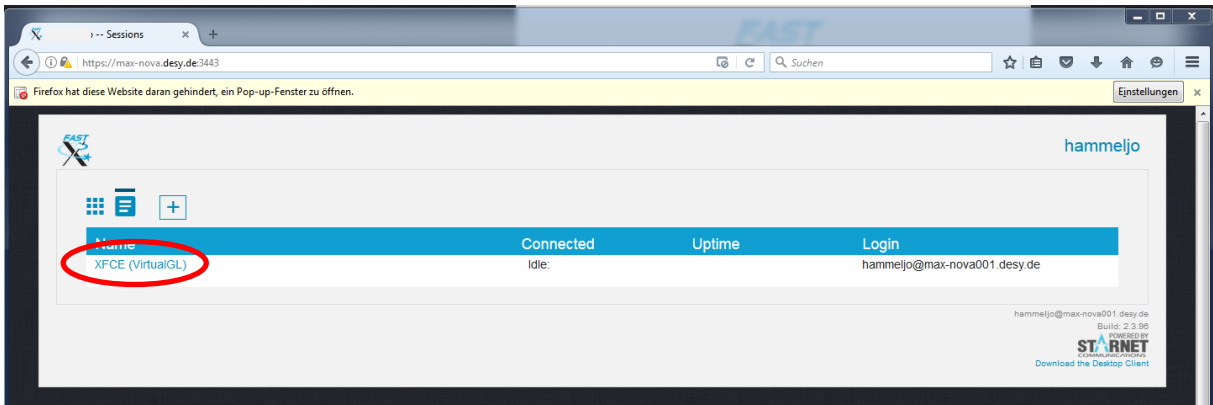
Select add new session:



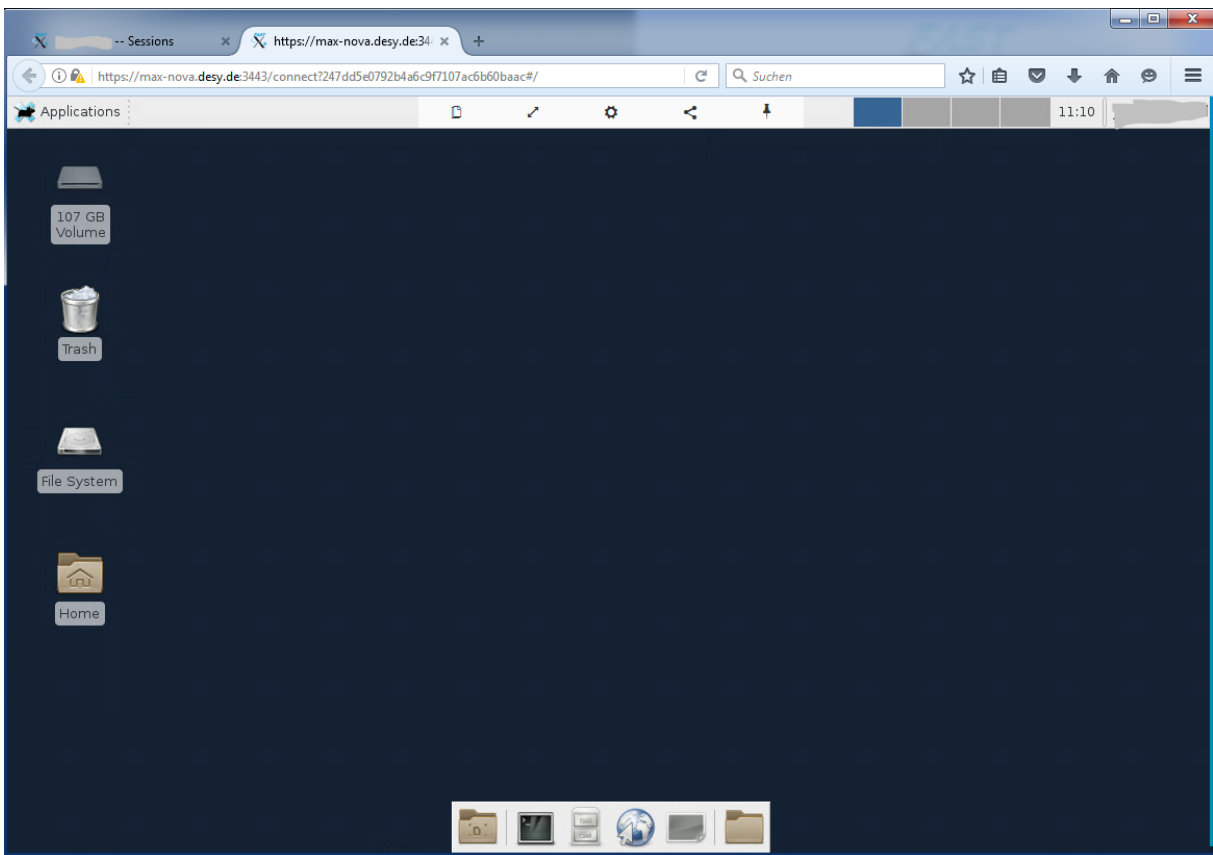
Click on the XFCE(VirtualGL) button and hit the start button.



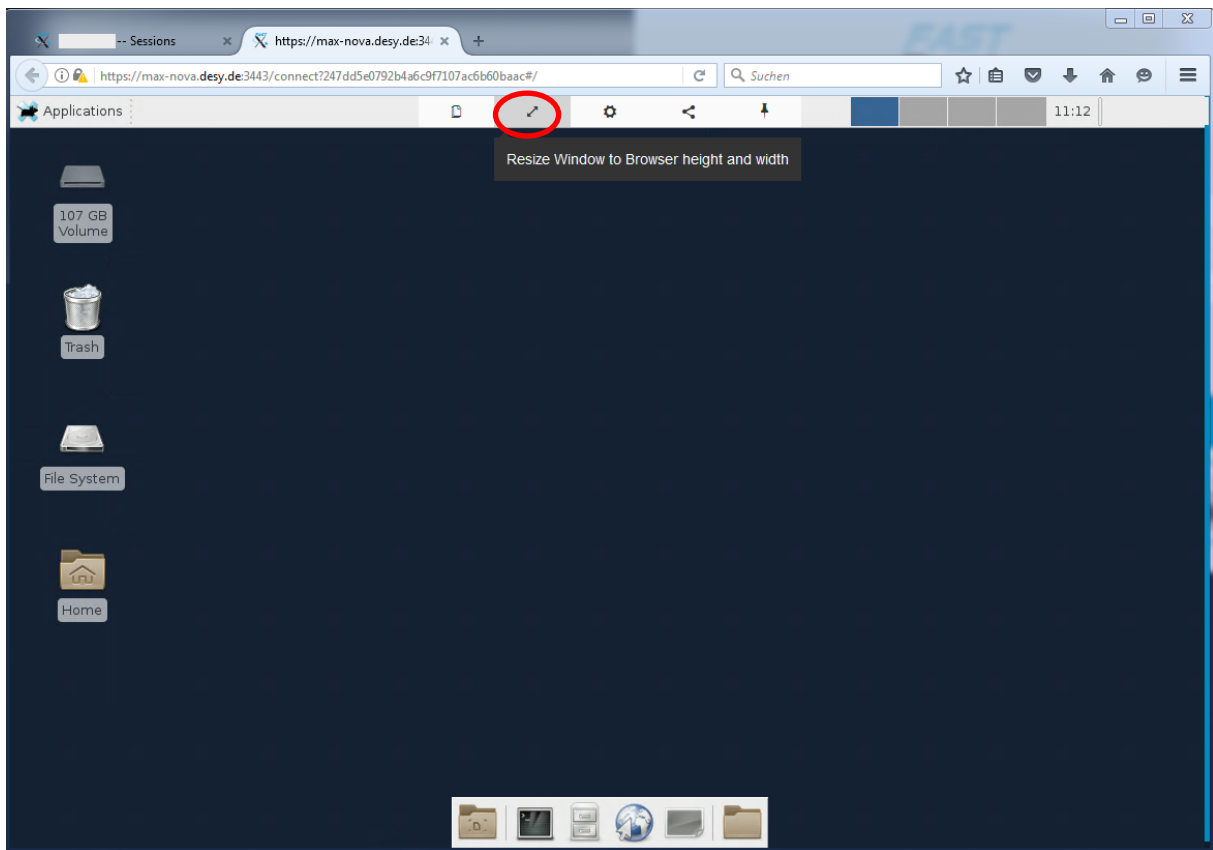
If your popup blocker is preventing the automatic start of your session select your session from the list.



Your session will start in a new tab.



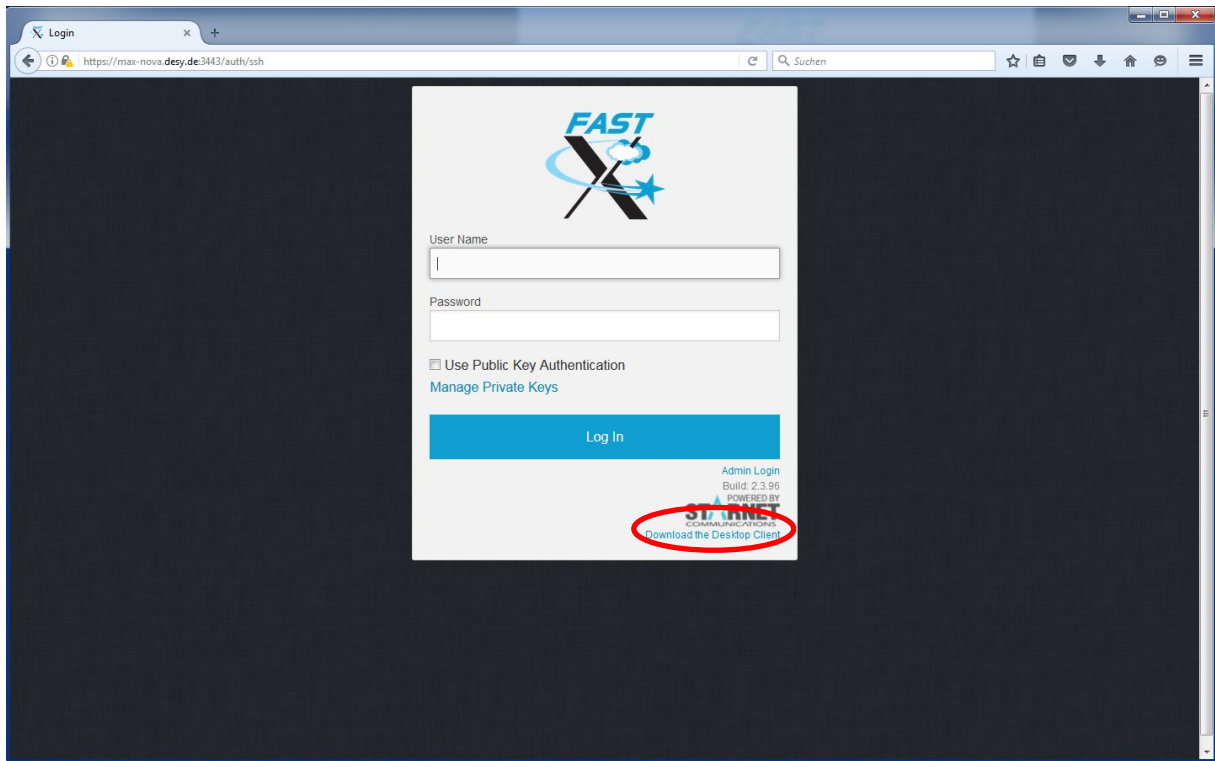
You can resize the desktop to your browser window using the pop up menu at top center.



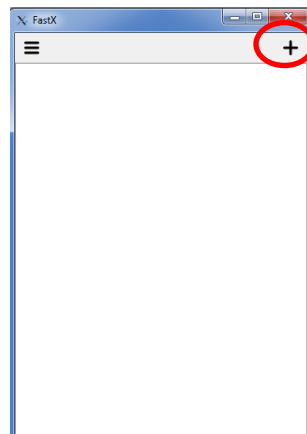
Instructions for using Avizo, Amira and VG Studio Max see below.

Connecting using the desktop client (recommended for best performance):

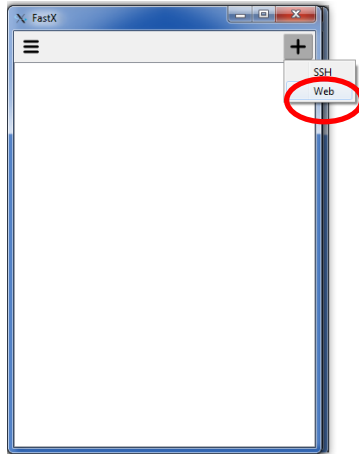
At first time download and install the Desktop client. You will need the matching version to the server running on the NOVA hardware.



Start the FASTX2 client:

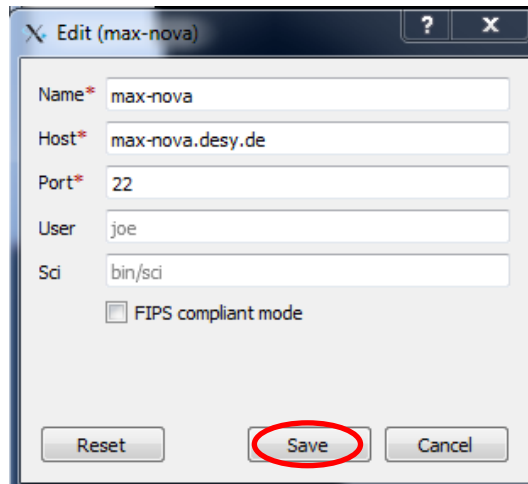


Add and configure a new connection entry and select WEB:

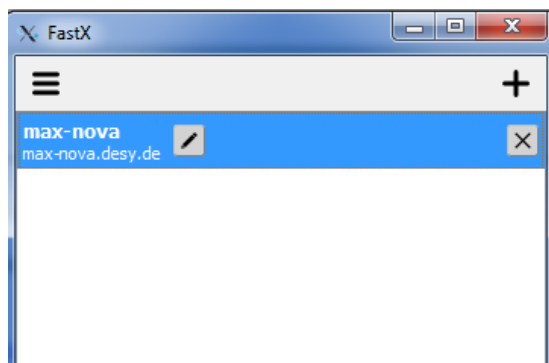


Choosing “Web” **not** “SSH” has the advantage, that the system remembers all your sessions, so you don’t have to remember the actual host your session was running on, and desktop-sharing will work more smoothly.

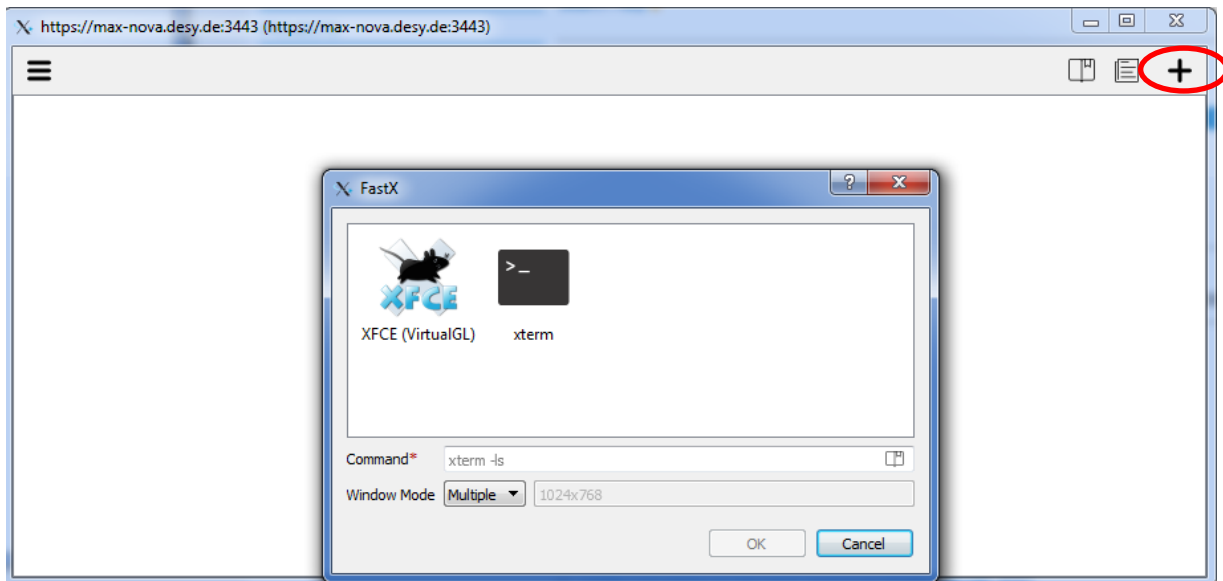
Add the following connection details and your DESY PSX login



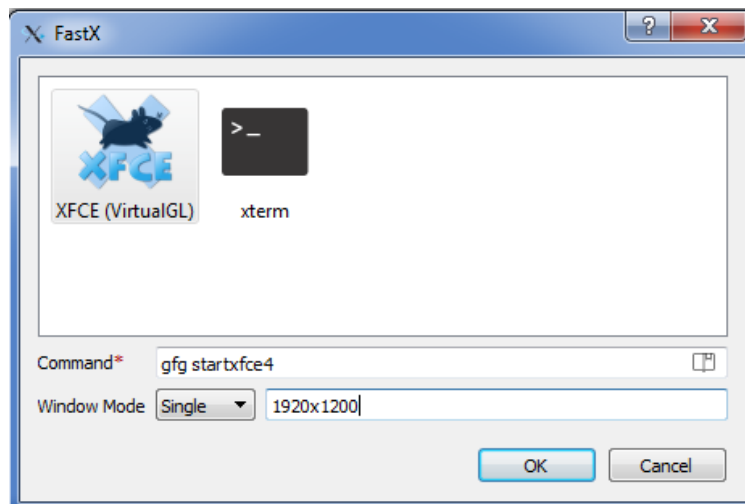
A new connection entry is added to the client.



Start connecting to your session by selecting the entry in the list and start a virtual desktop session by clicking on the + button.



Select XFCE(VirtualGL) and adjust the window resolution if wanted to your needs.

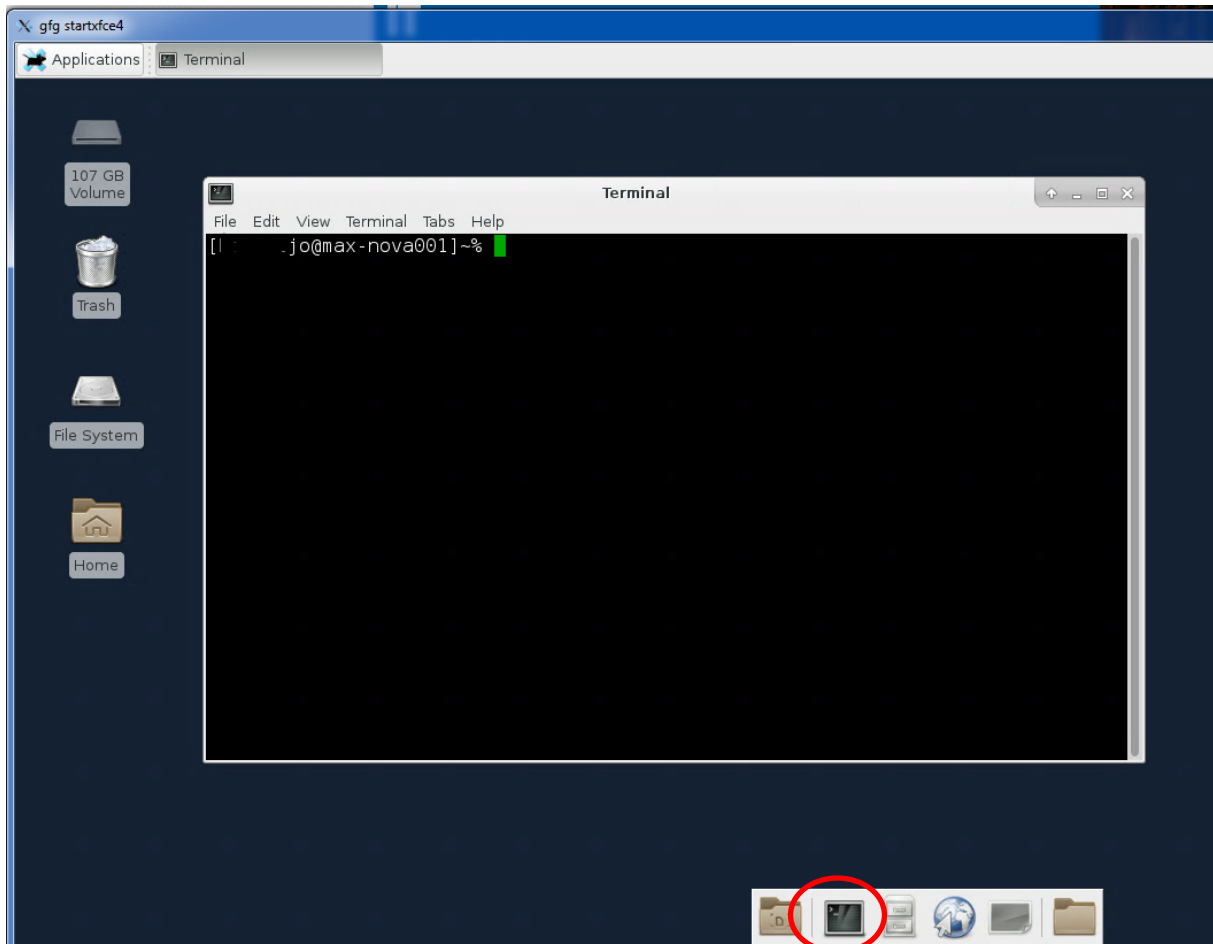


Your virtual desktop session will start automatically.

Using HZG software packages on the NOVA system:

!! Important !! Always disconnect and close software if you are not actively working with it to free software licenses. Resources are available and allocated by fair use.

Start a terminal window.

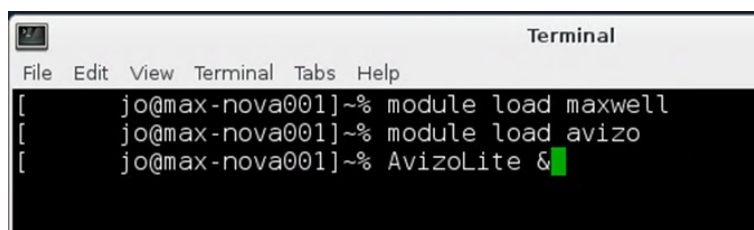


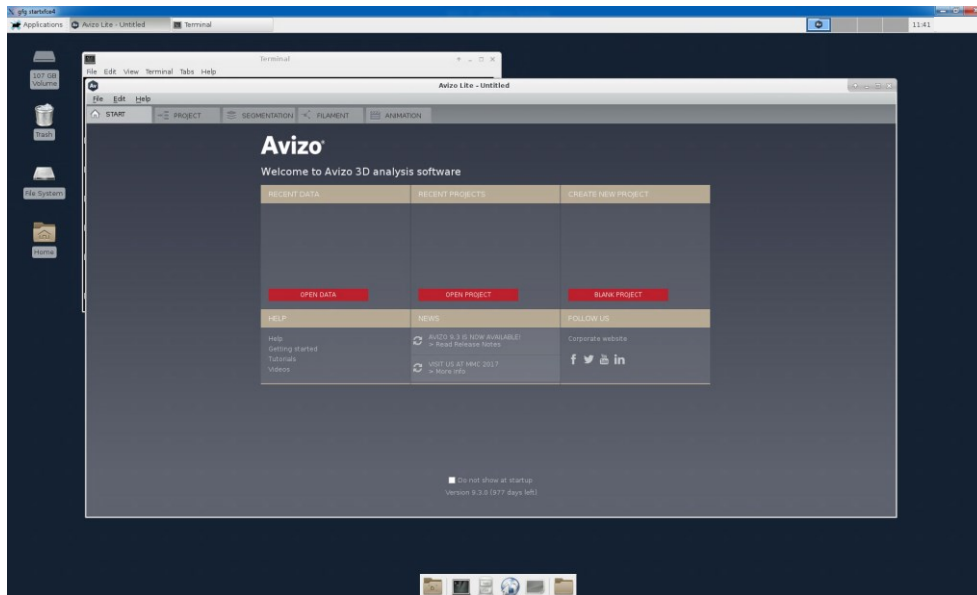
To start Avizo or Amira type in the terminal:

```
module load maxwell  
module load avizo  
AvizoLite &
```

Or

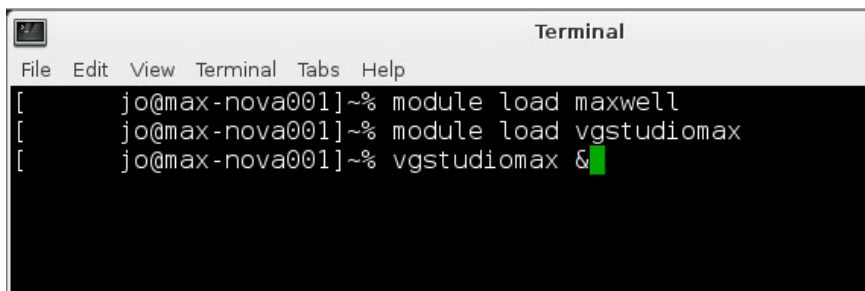
```
module load maxwell  
module load amira  
Amira &
```





Starting VG Studio Max using the following commands

```
module load maxwell  
module load vgstudiomax  
vgstudiomax &
```



You will find your data in the following general path:

/asap3/petra3/gpfs/p0X/201X/data/1100XXXX/processed/

e.g. for p05 in 2017: /asap3/petra3/gpfs/p05/2017/data/11001234/processed/

Granting access to your data is managed via the DESY gamma portal.

Instructions for using the portal can be obtained here:

<https://confluence.desy.de/display/ASAP3/The+Gamma+Portal>

Use the “click for ACL” management icon to add additional users to your beamtime and allow access to the data.